

## **PROJECT INFORMATION**

### **COUNTY:**

*Boone*

### **ROUTE:**

*US 42*

### **ITEM NUMBER:**

*6-064.01*

### **DISTRICT:**

*6 (Covington)*

### **PROJECT DESCRIPTION:**

*Phase II Design of a 5 lane curb and gutter section of US 42 from 500 meters south of KY 3020 to 800 meters north of Long Branch Road, a distance of 4.1 km.*

### **USER DIVISION:**

*Highway Design*

### **APPROXIMATE FEE:**

*\$300,000*

### **PURPOSE AND NEED:**

*To improve safety and increase capacity.*

### **PROCUREMENT SCHEDULE:**

<b>RESPONSE DATE</b>	<i>Thursday, September 4, 1997, 4:30 p. m. (Frankfort Time)</i>
<b>FIRST SELECTION COMMITTEE DATE</b>	<i>Approximately 3 working days after responses are due.</i>
<b>TENTATIVE SECOND COMMITTEE DATE</b>	<i>Approximately 10 working days after 1<sup>st</sup> selection meeting (Selected firm will be notified)</i>
<b>TENTATIVE PRE-DESIGN CONFERENCE</b>	<i>October 7, 1997</i>
<b>TENTATIVE DEADLINE FOR CONSULTANT FEE PROPOSAL</b>	<i>November 4, 1997</i>

### **EVALUATION FACTORS:**

1. *Relative experience of consultant personnel assigned to project team with highway projects for KTC and/or for federal, local or other state governmental agencies. (10 points)*
2. *Capacity to comply with project schedule. (10 points)*
3. *Past record of performance on project of similar type and complexity. (10 points)*
4. *Project approach and proposed procedures to accomplish the services for the project. (10 points)*
5. *Location of offices where work is to be performed. (2 points)*

### **SELECTION COMMITTEE MEMBERS:**

1. *John Geddes, State Auditor's Office*
2. *George Hoffman, User Division*
3. *David Kratt, User Division*
4. *Andre Johannes, Secretary's Pool*
5. *Roger Coffey, Secretary's Pool*
6. *Jasper Sullivan, Governor's Pool*

### **DBE REQUIREMENT:**

*None*

### **SPECIAL INSTRUCTIONS:**

*It is anticipated that the preferred Alternate No. 3 will be revised by the selected consultant as outlined in the approved FONSI for the project. Changes are as follows:*

- 1. The beginning of the project will be shifted to 1000 meters south of KY 3020 and will include the reconstruction of the entrance to Gray Middle School with a full typical.*
- 2. The intersection of US 42 and KY 3070 will be shifted to the west to accommodate the recently constructed Ameristop Food Mart.*
- 3. The alignment from 700 meters south of KY 536 to 1500 meters north of KY 536 will be shifted as much as 60 meters to the east to avoid impacts to various properties and eliminate a "broken back" horizontal curve.*

### **SCOPE:**

*Evaluate tentative preliminary line and grade, prepare final right of way plans, right of way plans for utilities, and construction plans.*

### **AVAILABLE KTC STUDIES:**

*Tentative preliminary line and grade plans have been approved by the Department's Division of Highway Design and designated as Alternate No. 3. It is anticipated that the above Alternate No. 3 will be revised by the selected consultant as outlined in the approved FONSI for the project. See the SPECIAL INSTRUCTIONS for detailed changes.*

*A copy of the FONSI document is available for inspection in the Division of Professional Services, Room 610, State Office Building, Frankfort, Kentucky between the hours of 9:00 a.m. and 3:00 p.m. (EDT) from August 13, 1997 until September 3, 1997. Consultants may obtain copies from Lynn Copies, 1122 US Highway 127 South, Frankfort, Kentucky 40601, Phone: 502/875-8341. Studies will cost \$15.00 per copy.*

### **PROJECT LENGTH:**

*4.5 km*

### **METHOD OF DESIGN:**

X *Metric Units*

X *CADD Capability(with DGN Design File Format) \_*

\_ *CADD Based Automated Highway Design System*

X *Digital Terrain Modeling*

**ENVIRONMENTAL:**

*An Environmental Assessment / FONSI has been prepared for the project.*

**PHOTOGRAMMETRIC SERVICES:**

*The Department will be responsible for aerial photography and will furnish manuscripts on computer discs in .DGN format.*

**STRUCTURE DESIGN:**

*The selected consultant shall provide engineering services for the preparation of an Advanced Situation Folder(s) for the appropriate applicable structures. Prequalification in the area of structure design is not required to be identified in the consultant Response to Announcement.*

**GEOTECHNICAL SERVICES:**

*All geotechnical work is to be performed by the Department of Highways.*

**PROJECT FUNDING:**

*Federal*

**TRAFFIC:**

*16,200 ADT (Projected 2013)*

**PROJECT SCHEDULE MILESTONES:**

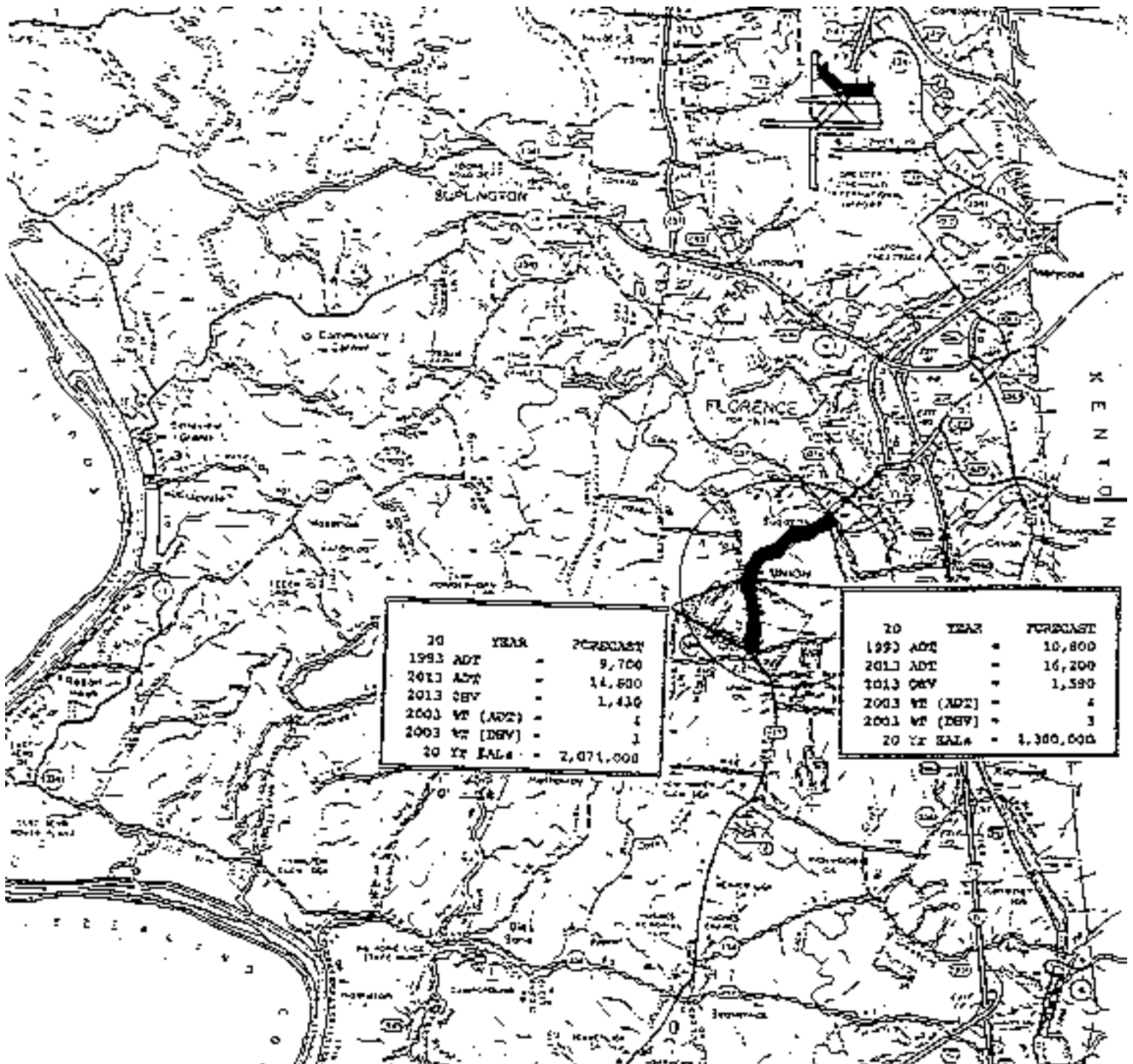
<b><i>FINAL LINE AND GRADE</i></b>	<i>January 1, 1998</i>
<b><i>FINAL PLAN IN HAND INSPECTION</i></b>	<i>May 1, 1998</i>
<b><i>RIGHT OF WAY PLANS</i></b>	<i>August 1, 1998</i>
<b><i>RIGHT OF WAY PLANS FOR UTILITIES</i></b>	<i>August 1, 1998</i>
<b><i>FINAL ROADWAY PLANS</i></b>	<i>February 1, 2000</i>

**PREQUALIFICATION REQUIREMENTS:**

*The project team shall have prequalification in all areas identified below:*

<u>ROADWAY DESIGN</u>
Urban Roadway Design
Surveying

**LOCATION MAP:**



TD	YEAR	FORECAST
1993	ADT	9,700
2013	ADT	14,500
2013	DEV	1,410
2003	WT (ADT)	4
2003	WT (DEV)	1
20 Yr SALES		2,071,000

TD	YEAR	FORECAST
1993	ADT	10,800
2013	ADT	16,200
2013	DEV	1,590
2003	WT (ADT)	4
2003	WT (DEV)	3
20 Yr SALES		4,300,000



COMMONWEALTH OF KENTUCKY  
SKETCH MAP ACCOMPANYING PROGRAM SUBMISSION  
BOONE COUNTY  
STPR 5138 (44)

THE UNION-FLORENCE ROAD (US42)  
ITEM NO. 115 ROUTE NO. —  
NOVEMBER 30, 1992

[Goto Pike County - 12-1043.00 & 12-1062.00](#)